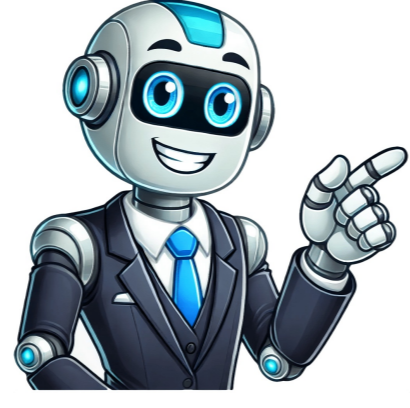


Click to prove
you're human



Download Article
Download Article
Transmission fluid needs to be changed from time to time in order to extend the life of the transmission, usually every 30,00060,000 miles (48,00097,000km) (sometimes more check your owner's manual for service intervals). When the transmission fluid gets old, you might have trouble shifting, or your car may get sluggish or stall at stoplights. You can consult your owner's manual to find out how often you need to change your fluids, but you can also learn to diagnose and address the issue yourself.[1]
1 Check the level of transmission fluid first using the dipstick.[2]
2 Automatic transmission fluid (ATF) is the fluid used in vehicles with self-shifting or automatic transmissions. It's typically colored red or green to distinguish it from motor oil and other fluids in the vehicle. On most vehicles, you can check the level with a dipstick, while the engine is running.Look for the transmission fluid dipstick, which is usually red-handled. It should be labeled clearly and easy to access on most cars, close to the oil dipstick.
3) Dipsticks list a hot and cold reading. If your engine has not been run in about an hour and you do not live in an extremely hot climate refer to the Cold Reading for proper levels.If your levels are low, but the fluid looks clean, you might just top off the system.[4]
4) If the fluid looks discolored or sludgy, you need to change it. If you're at the mileage marker that requires you to change your transmission fluid, you might just elect to change it anyway, even if the fluid looks good.
2lift and support the vehicle with jack stands. Make sure you've got enough room to squeeze under the vehicle and that the jacks are supported securely.Always park on a flat, even surface when you're working under the car and use support stands, chucks, or other acceptable bracing to ensure safety should a jack fail or the vehicle attempt to roll off ramps.[5]
Advertisement
3locate the transmission fluid pan. The pan will be attached to the bottom of the transmission with six to eight bolts, so you'll have to crawl underneath the vehicle to locate it. For front-wheel drive vehicles, the transmission is typically situated left-to-right under the engine bay. For rear-wheeled vehicles, the transmission typically hangs under the center console area, facing front to rear.Examine the pan. In most vehicles, you'll be able to drain the transmission fluid by removing a drain plug in the center of the pan and letting the fluid drain into a receptacle. On some vehicles, however, you might have to remove the transmission pan entirely. The fluid pan will have multiple smaller bolts around the border to hold the pan to the transmission, which you can unscrew and pull the pan free.If you want to inspect the fluid filter, gaskets, or any other components, you may want to remove the pan anyway to examine the assembly more thoroughly.
Advertisement
1Place a collection pan under the drain hole. To catch the falling transmission fluid, you'll need a pan under the drain bolt big enough to catch it. Inexpensive plastic receptacles are available at most auto shops.[6]If your transmission lacks a drain plug, draining the fluid is potentially a very messy operation. Because the fluid will drain around the pan (rather than through a drain plug hole), you will need a collection pan at least as wide as the transmission pan itself if you don't want to make a mess.EXPERT TIP
Hovig Manouchekian Auto Repair & Design Specialist
Hovig Manouchekian is an Auto Repair and Design Specialist and the Manager of Funk Brothers Auto, a family-owned business operated since 1925. With over 30 years of experience in the automotive industry, Hovig specializes in the process of auto repair and maintenance. He is also very knowledgeable in common automotive issues and needs including engine repair, battery replacement, and windshield accessory and maintenance. Hovig's knowledge and hard work have contributed to Funk Brothers Auto winning Angie's List Super Service Award for five consecutive years. Act immediately if there is coolant in your transmission. Flush the transmission fluid immediately to remove contamination. Identify the leak source and see a mechanic for diagnosis and repair. Ignoring this can destroy your transmission.
2Drain the fluid. To drain the fluid, you'll either unscrew the drain bolt or remove the pan and the fluid will start draining immediately. It's likely that you'll get some fluid on your hands (it's almost impossible to avoid this), but you can make sure that you keep your face and chest out of the way to minimize the spillage. Place the receptacle under it, unscrew the plug, and pull it away and free quickly to get out of the way.[7]If the transmission pan has a drain plug, remove the plug to drain the fluid into a collection pan. Use a pan that can contain up to ten quarts of transmission fluid, although that much probably will not drain out.If you need to remove the entire transmission fluid pan, unscrew the two upper-most bolts halfway, then unscrew the other bolts all the way. As soon as the last bolt is completely unscrewed, the pan may drop a bit and fluid will begin draining. You may also have to pull it loose using some force.
3Examine the fluid that drains out. Most automatic transmission pans have a magnet inside to collect metal shavings that have been produced by worn moving parts. Remove these shavings along with the remaining fluid in the pan. Metal shavings are normal and represent the typical wear and tear of the gears. Any large or odd-shaped chunks however are not normal. Keep these pieces and seek the advice of a certified mechanic to ensure the transmission is not in need of immediate attention.About 50 percent of the fluid will remain in the transmission when you drain it. To remove all the fluid, including the fluid in the torque converter, you must flush the transmission completely, a process that is usually part of a more comprehensive maintenance routine.
Advertisement
1Evaluate the transmission fluid filter and gaskets. While you're changing the fluid, it's a good idea to inspect and evaluate the status of the filter and gaskets and replace them if necessary. They won't need to be replaced every time, but cracked or leaky filters and gaskets need to be removed and replaced with identical parts, which you can purchase at an auto supply store. To find out how to do this, or if you elect not to, replace the plug and the pan assembly, tightening with a socket or torque wrench. Don't over tighten the bolts.
2Add new transmission fluid.[8]
Once the pan is back on the vehicle, you can take the car down off the jacks and replace the transmission fluid with the appropriate variety.There are different kinds of transmission fluid, so you want to make sure to use the kind recommended by the car manufacturer. Check your owner's manual to add the correct variety of fluid.On most vehicles, you'll add the transmission fluid through the port from which you removed the dipstick. The new fluid goes directly into this spot, in most cases. You will need to use a funnel. Pour in a little less fluid than drained out so as not to overfill. You can find out the proper amounts in your owner's manual. Prevent transmission problems with regular fluid changes.
1 "I didn't realize you were supposed to change transmission fluid regularly as preventative maintenance. This article explained that old fluid can make shifting sluggish and even stall the engine. Doing periodic fluid changes can really extend the life of your transmission." - Betty B.
**Check transmission fluid correctly using dipstick readings. "I used to just look at the transmission fluid and guess if it needed changing. Reading this taught me to properly check the level with the dipstick first. It explains the difference between hot and cold readings, which I'll follow to make sure I have the right amount." - Sanju P. Save transmission from expensive repairs by changing fluid. "I was experiencing some slipping in my transmission so I decided to try changing the fluid myself after reading this. Even though the old fluid wasn't too dirty, the new fluid totally fixed my slipping problem and saved me from an expensive transmission rebuild." - Arthur H. Understand how to completely change all transmission fluid. "I didn't realize that only about half the fluid gets changed during a routine change. This article explained that you need a full flush to get all the fluid out, including what's in the torque converter. Now I understand exactly what's involved in a complete fluid change." - Ab C. Did you know that wikiHow has collected over 365,000 reader stories since it started in 2005? We'd love to hear from you! Share your own story.
2Share your story.
3Share your story.
4Share your story.
5Share your story.
6Share your story.
7Share your story.
8Share your story.
9Share your story.
10Share your story.
11Share your story.
12Share your story.
13Share your story.
14Share your story.
15Share your story.
16Share your story.
17Share your story.
18Share your story.
19Share your story.
20Share your story.
21Share your story.
22Share your story.
23Share your story.
24Share your story.
25Share your story.
26Share your story.
27Share your story.
28Share your story.
29Share your story.
30Share your story.
31Share your story.
32Share your story.
33Share your story.
34Share your story.
35Share your story.
36Share your story.
37Share your story.
38Share your story.
39Share your story.
40Share your story.
41Share your story.
42Share your story.
43Share your story.
44Share your story.
45Share your story.
46Share your story.
47Share your story.
48Share your story.
49Share your story.
50Share your story.
51Share your story.
52Share your story.
53Share your story.
54Share your story.
55Share your story.
56Share your story.
57Share your story.
58Share your story.
59Share your story.
60Share your story.
61Share your story.
62Share your story.
63Share your story.
64Share your story.
65Share your story.
66Share your story.
67Share your story.
68Share your story.
69Share your story.
70Share your story.
71Share your story.
72Share your story.
73Share your story.
74Share your story.
75Share your story.
76Share your story.
77Share your story.
78Share your story.
79Share your story.
80Share your story.
81Share your story.
82Share your story.
83Share your story.
84Share your story.
85Share your story.
86Share your story.
87Share your story.
88Share your story.
89Share your story.
90Share your story.
91Share your story.
92Share your story.
93Share your story.
94Share your story.
95Share your story.
96Share your story.
97Share your story.
98Share your story.
99Share your story.
100Share your story.
101Share your story.
102Share your story.
103Share your story.
104Share your story.
105Share your story.
106Share your story.
107Share your story.
108Share your story.
109Share your story.
110Share your story.
111Share your story.
112Share your story.
113Share your story.
114Share your story.
115Share your story.
116Share your story.
117Share your story.
118Share your story.
119Share your story.
120Share your story.
121Share your story.
122Share your story.
123Share your story.
124Share your story.
125Share your story.
126Share your story.
127Share your story.
128Share your story.
129Share your story.
130Share your story.
131Share your story.
132Share your story.
133Share your story.
134Share your story.
135Share your story.
136Share your story.
137Share your story.
138Share your story.
139Share your story.
140Share your story.
141Share your story.
142Share your story.
143Share your story.
144Share your story.
145Share your story.
146Share your story.
147Share your story.
148Share your story.
149Share your story.
150Share your story.
151Share your story.
152Share your story.
153Share your story.
154Share your story.
155Share your story.
156Share your story.
157Share your story.
158Share your story.
159Share your story.
160Share your story.
161Share your story.
162Share your story.
163Share your story.
164Share your story.
165Share your story.
166Share your story.
167Share your story.
168Share your story.
169Share your story.
170Share your story.
171Share your story.
172Share your story.
173Share your story.
174Share your story.
175Share your story.
176Share your story.
177Share your story.
178Share your story.
179Share your story.
180Share your story.
181Share your story.
182Share your story.
183Share your story.
184Share your story.
185Share your story.
186Share your story.
187Share your story.
188Share your story.
189Share your story.
190Share your story.
191Share your story.
192Share your story.
193Share your story.
194Share your story.
195Share your story.
196Share your story.
197Share your story.
198Share your story.
199Share your story.
200Share your story.
201Share your story.
202Share your story.
203Share your story.
204Share your story.
205Share your story.
206Share your story.
207Share your story.
208Share your story.
209Share your story.
210Share your story.
211Share your story.
212Share your story.
213Share your story.
214Share your story.
215Share your story.
216Share your story.
217Share your story.
218Share your story.
219Share your story.
220Share your story.
221Share your story.
222Share your story.
223Share your story.
224Share your story.
225Share your story.
226Share your story.
227Share your story.
228Share your story.
229Share your story.
230Share your story.
231Share your story.
232Share your story.
233Share your story.
234Share your story.
235Share your story.
236Share your story.
237Share your story.
238Share your story.
239Share your story.
240Share your story.
241Share your story.
242Share your story.
243Share your story.
244Share your story.
245Share your story.
246Share your story.
247Share your story.
248Share your story.
249Share your story.
250Share your story.
251Share your story.
252Share your story.
253Share your story.
254Share your story.
255Share your story.
256Share your story.
257Share your story.
258Share your story.
259Share your story.
260Share your story.
261Share your story.
262Share your story.
263Share your story.
264Share your story.
265Share your story.
266Share your story.
267Share your story.
268Share your story.
269Share your story.
270Share your story.
271Share your story.
272Share your story.
273Share your story.
274Share your story.
275Share your story.
276Share your story.
277Share your story.
278Share your story.
279Share your story.
280Share your story.
281Share your story.
282Share your story.
283Share your story.
284Share your story.
285Share your story.
286Share your story.
287Share your story.
288Share your story.
289Share your story.
290Share your story.
291Share your story.
292Share your story.
293Share your story.
294Share your story.
295Share your story.
296Share your story.
297Share your story.
298Share your story.
299Share your story.
300Share your story.
301Share your story.
302Share your story.
303Share your story.
304Share your story.
305Share your story.
306Share your story.
307Share your story.
308Share your story.
309Share your story.
310Share your story.
311Share your story.
312Share your story.
313Share your story.
314Share your story.
315Share your story.
316Share your story.
317Share your story.
318Share your story.
319Share your story.
320Share your story.
321Share your story.
322Share your story.
323Share your story.
324Share your story.
325Share your story.
326Share your story.
327Share your story.
328Share your story.
329Share your story.
330Share your story.
331Share your story.
332Share your story.
333Share your story.
334Share your story.
335Share your story.
336Share your story.
337Share your story.
338Share your story.
339Share your story.
340Share your story.
341Share your story.
342Share your story.
343Share your story.
344Share your story.
345Share your story.
346Share your story.
347Share your story.
348Share your story.
349Share your story.
350Share your story.
351Share your story.
352Share your story.
353Share your story.
354Share your story.
355Share your story.
356Share your story.
357Share your story.
358Share your story.
359Share your story.
360Share your story.
361Share your story.
362Share your story.
363Share your story.
364Share your story.
365Share your story.
366Share your story.
367Share your story.
368Share your story.
369Share your story.
370Share your story.
371Share your story.
372Share your story.
373Share your story.
374Share your story.
375Share your story.
376Share your story.
377Share your story.
378Share your story.
379Share your story.
380Share your story.
381Share your story.
382Share your story.
383Share your story.
384Share your story.
385Share your story.
386Share your story.
387Share your story.
388Share your story.
389Share your story.
390Share your story.
391Share your story.
392Share your story.
393Share your story.
394Share your story.
395Share your story.
396Share your story.
397Share your story.
398Share your story.
399Share your story.
400Share your story.
401Share your story.
402Share your story.
403Share your story.
404Share your story.
405Share your story.
406Share your story.
407Share your story.
408Share your story.
409Share your story.
410Share your story.
411Share your story.
412Share your story.
413Share your story.
414Share your story.
415Share your story.
416Share your story.
417Share your story.
418Share your story.
419Share your story.
420Share your story.
421Share your story.
422Share your story.
423Share your story.
424Share your story.
425Share your story.
426Share your story.
427Share your story.
428Share your story.
429Share your story.
430Share your story.
431Share your story.
432Share your story.
433Share your story.
434Share your story.
435Share your story.
436Share your story.
437Share your story.
438Share your story.
439Share your story.
440Share your story.
441Share your story.
442Share your story.
443Share your story.
444Share your story.
445Share your story.
446Share your story.
447Share your story.
448Share your story.
449Share your story.
450Share your story.
451Share your story.
452Share your story.
453Share your story.
454Share your story.
455Share your story.
456Share your story.
457Share your story.
458Share your story.
459Share your story.
460Share your story.
461Share your story.
462Share your story.
463Share your story.
464Share your story.
465Share your story.
466Share your story.
467Share your story.
468Share your story.
469Share your story.
470Share your story.
471Share your story.
472Share your story.
473Share your story.
474Share your story.
475Share your story.
476Share your story.
477Share your story.
478Share your story.
479Share your story.
480Share your story.
481Share your story.
482Share your story.
483Share your story.
484Share your story.
485Share your story.
486Share your story.
487Share your story.
488Share your story.
489Share your story.
490Share your story.
491Share your story.
492Share your story.
493Share your story.
494Share your story.
495Share your story.
496Share your story.
497Share your story.
498Share your story.
499Share your story.
500Share your story.
501Share your story.
502Share your story.
503Share your story.
504Share your story.
505Share your story.
506Share your story.
507Share your story.
508Share your story.
509Share your story.
510Share your story.
511Share your story.
512Share your story.
513Share your story.
514Share your story.
515Share your story.
516Share your story.
517Share your story.
518Share your story.
519Share your story.
520Share your story.
521Share your story.
522Share your story.
523Share your story.
524Share your story.
525Share your story.
526Share your story.
527Share your story.
528Share your story.
529Share your story.
530Share your story.
531Share your story.
532Share your story.
533Share your story.
534Share your story.
535Share your story.
536Share your story.
537Share your story.
538Share your story.
539Share your story.
540Share your story.
541Share your story.
542Share your story.
543Share your story.
544Share your story.
545Share your story.
546Share your story.
547Share your story.
548Share your story.
549Share your story.
550Share your story.
551Share your story.
552Share your story.
553Share your story.
554Share your story.
555Share your story.
556Share your story.
557Share your story.
558Share your story.
559Share your story.
560Share your story.
561Share your story.
562Share your story.
563Share your story.
564Share your story.
565Share your story.
566Share your story.
567Share your story.
568Share your story.
569Share your story.
570Share your story.
571Share your story.
572Share your story.
573Share your story.
574Share your story.
575Share your story.
576Share your story.
577Share your story.
578Share your story.
579Share your story.
580Share your story.
581Share your story.
582Share your story.
583Share your story.
584Share your story.
585Share your story.
586Share your story.
587Share your story.
588Share your story.
589Share your story.
590Share your story.
591Share your story.
592Share your story.
593Share your story.
594Share your story.
595Share your story.
596Share your story.
597Share your story.
598Share your story.
599Share your story.
600Share your story.
601Share your story.
602Share your story.
603Share your story.
604Share your story.
605Share your story.
606Share your story.
607Share your story.
608Share your story.
609Share your story.
610Share your story.
611Share your story.
612Share your story.
613Share your story.
614Share your story.
615Share your story.
616Share your story.
617Share your story.
618Share your story.
619Share your story.
620Share your story.
621Share your story.
622Share your story.
623Share your story.
624Share your story.
625Share your story.
626Share your story.
627Share your story.
628Share your story.
629Share your story.
630Share your story.
631Share your story.
632Share your story.
633Share your story.
634Share your story.
635Share your story.
636Share your story.
637Share your story.
638Share your story.
639Share your story.
640Share your story.
641Share your story.
642Share your story.
643Share your story.
644Share your story.
645Share your story.
646Share your story.
647Share your story.
648Share your story.
649Share your story.
650Share your story.
651Share your story.
652Share your story.
653Share your story.
654Share your story.
655Share your story.
656Share your story.
657Share your story.
658Share your story.
659Share your story.
660Share your story.
661Share your story.
662Share your story.
663Share your story.
664Share your story.
665Share your story.
666Share your story.
667Share your story.
668Share your story.
669Share your story.
670Share your story.
671Share your story.
672Share your story.
673Share your story.
674Share your story.
675Share your story.
676Share your story.
677Share your story.
678Share your story.
679Share your story.
680Share your story.
681Share your story.
682Share your story.
683Share your story.
684Share your story.
685Share your story.
686Share your story.
687Share your story.
688Share your story.
689Share your story.
690Share your story.
691Share your story.
692Share your story.
693Share your story.
694Share your story.
695Share your story.
696Share your story.
697Share your story.
698Share your story.
699Share your story.
700Share your story.
701Share your story.
702Share your story.
703Share your story.
704Share your story.
705Share your story.
706Share your story.
707Share your story.
708Share your story.
709Share your story.
710Share your story.
711Share your story.
712Share your story.
713Share your story.
714Share your story.
715Share your story.
716Share your story.
717Share your story.
718Share your story.
719Share your story.
720Share your story.
721Share your story.
722Share your story.
723Share your story.
724Share your story.
725Share your story.
726Share your story.
727Share your story.
728Share your story.
729Share your story.
730Share your story.
731Share your story.
732Share your story.
733Share your story.
734Share your story.
735Share your story.
736Share your story.
737Share your story.
738Share your story.
739Share your story.
740Share your story.
741Share your story.
742Share your story.
743Share your story.
744Share your story.
745Share your story.
746Share your story.
747Share your story.
748Share your story.
749Share your story.
750Share your story.
751Share your story.
752Share your story.
753Share your story.
754Share your story.
755Share your story.
756Share your story.
757Share your story.
758Share your story.
759Share your story.
760Share your story.
761Share your story.
762Share your story.
763Share your story.
764Share your story.
765Share your story.
766Share your story.
767Share your story.
768Share your story.
769Share your story.
770Share your story.
771Share your story.
772Share your story.
773Share your story.
774Share your story.
775Share your story.
776Share your story.
777Share your story.
778Share your story.
779Share your story.
780Share your story.
781Share your story.
782Share your story.
783Share your story.
784Share your story.
785Share your story.
786Share your story.
787Share your story.
788Share your story.
789Share your story.
790Share your story.
791Share your story.
792Share your story.
793Share your story.
794Share your story.
795Share your story.
796Share your story.
797Share your story.
798Share your story.
799Share your story.
800Share your story.
801Share your story.
802Share your story.
803Share your story.
804Share your story.
805Share your story.
806Share your story.
807Share your story.
808Share your story.
809Share your story.**

has a long intake neck, gently pull the neck into place without unseating the O-Ring. Insert the oil pan by any damages. Also, check the type of residue that collects at the bottom after draining the oil. Fine grey clutch dust is a typical residue, but fine metal shaving is a sign of transmission damage. It indicates some parts of the transmission have been grinding and wearing each other out. In newer vehicle models, a magnetic filter is fitted to the bottom of the pan anyway to trap metal shavings. Clean the oil pan thoroughly with a solvent, removing all the oil. Use a magnet to remove the metal shaving residues. The reservoir has a trap-magnet, it will have collected all the metal shavings. Clean it to remove all the metal shaving. Do not forget to fix back the magnet after cleaning. After cleaning the pan, position the new gasket ensuring it aligns with pinpoint accuracy. All the four bolt holes should help you to align the gasket. Fit back the pan with gasket aligning it properly, ready for bolting. Bolt the pan-reservoir in a crisscross pattern by hand and only use a torque wrench when you are sure all the bolts are well aligned. Bolting by hand prevents the pan or the gasket from being damaged. If you can no longer tighten the bolts manually, you need to use a torque wrench next to tighten them to the manufacturer recommended ft-lbs, ensuring there will be no fluid leaks. The system is now ready for new transmission oil. Most vehicles have transmission oil refill cup above the gearbox, and you may require a pipe/tube to transfer the transmission-oil. Suspend the container above the refill cup, connect the tubing and siphon to initiate the flow. The refill is usually slow, taking about half an hour to one hour, so a thin tube is ideal. Regularly check the oil level and end the refill when the oil reaches the required volume. After closing back the refill cap, restart the engine and let it idle for a few minutes. Then change the gear into a different position from "Park" or "Neutral" momentarily and shift back to "Neutral". Recheck the transmission oil again and whether there is any leak. If you find leak immediately, seal the hole. Add more transmission oil if it is below the recommended level. If the level is okay, you're good to go. In case you are not sure about something, consult the experts before you attempt anything.(Blog from carpart.com.au) I dont even know how I ended up here, but I thought this post was great.I dont know who you are bbt certainly you going to a famous blogger if you arent already :) Cheers! Download Article Download Article Transmission fluid needs to be changed from time to time in order to extend the life of the transmission, usually every 30,000to60,000 miles (48,000to97,000km) (sometimes more check your owner's manual for service intervals). When the transmission fluid gets old, you might have trouble shifting, or your car may get sluggish or stall at stoplights. You can consult your owner's manual to find out how often you need to change your fluids, but you can also learn to diagnose and address the issue yourself.[1]
[Check the level of transmission fluid first using the dipstick.[2] Automatic transmission fluid (ATF) is the fluid used in vehicles with self-shifting or automatic transmissions. It's typically colored red or green to distinguish it from motor oil and other fluids in the vehicle. On most vehicles, you can check the level with a dipstick, while the engine is running.Look for the transmission fluid dipstick, which is usually red-handled. It should be labeled clearly and easy to access on most cars, close to the oil dipstick.[3] Dipsticks list a hot and cold reading. If your engine has not been run in about an hour and you do not live in an extremely hot climate refer to the Cold Reading for proper levels.If your levels are low, but the fluid looks clean, you might just top off the system.[4] If the fluid looks discolored or sludgy, you need to change it. If you're at the mileage marker that requires you to change your transmission fluid, you might just elect to change it anyway, even if the fluid looks good.2Lift and support the vehicle with jack stands. Make sure you've got enough room to squeeze under the vehicle and that the jacks are supported securely.Always park on a flat, even surface when you're working under the car and use support stands, chucks, or other acceptable bracing to ensure safety should a jack fail or the vehicle attempt to roll off ramps.[5] Advertisement 3Locate the transmission fluid pan. The pan will be attached to the bottom of the transmission with six to eight bolts, so you'll have to crawl underneath the vehicle to locate it. For front-wheel drive vehicles, the transmission is typically situated left-to-right under the engine bay. For rear-wheeled vehicles, the transmission typically hangs under the center console area, facing front to rear.Examine the pan. In most vehicles, you'll be able to drain the transmission fluid by removing a drain plug in the center of the pan and letting the fluid drain out into a receptacle. On some vehicles, however, you might have to remove the transmission pan entirely. The fluid pan will have multiple smaller bolts around the border to hold the pan to the transmission, which you can unscrew and pull the pan free.If you want to inspect the fluid filter, gaskets, or any other components, you may want to remove the pan anyway to examine the assembly more thoroughly. Advertisement 1Place a collection pan under the drain hole. To catch the falling transmission fluid, you'll need a pan under the drain bolt big enough to catch it. Inexpensive plastic receptacles are available at most auto shops.[6]If your transmission lacks a drain plug, draining the fluid is potentially a very messy operation. Because the fluid will drain around the pan (rather than through a drain plug hole), you will need a collection pan at least as wide as the transmission pan itself if you don't want to make a mess.EXPERT TIP Hovig Manouchekian Auto Repair & Design Specialist Hovig Manouchekian is an Auto Repair and Design Specialist and the Manager of Funk Brothers Auto, a family-owned business operated since 1925. With over 30 years of experience in the automotive industry, Hovig specializes in the process of auto repair and maintenance. He is also very knowledgeable in common automotive issues and needs including engine repair, battery replacement, and windshield accessory and maintenance. Hovig's knowledge and hard work have contributed to Funk Brothers Auto winning Angie's List Super Service Award for five consecutive years. Act immediately if there is coolant in your transmission. Flush the transmission fluid immediately to remove contamination. Identify the leak source and see a mechanic for diagnosis and repair. Ignoring this can destroy your transmission.2Drain the fluid. To drain the fluid, you'll either unscrew the drain bolt or remove the pan and the fluid will start draining immediately. It's likely that you'll get some fluid on your hands (it's almost impossible to avoid this), but you can make sure that you keep your face and chest out of the way to minimize the spillage. Place the receptacle under it, unscrew the plug, and pull it away and free quickly to get out of the way.[7]If the transmission pan has a drain plug, remove the plug to drain the fluid into a collection pan. Use a pan that can contain up to ten quarts of transmission fluid, although that much probably will not drain out.If you need to remove the entire transmission fluid pan, unscrew the two upper-most bolts halfway, then unscrew the other bolts all the way. As soon as the last bolt is completely unscrewed, the pan may drop a bit and fluid will begin draining. You may also have to pull it loose using some force.3Examine the fluid that drains out. Most automatic transmission pans have a magnet inside to collect metal shavings that have been produced by worn moving parts. Remove these shavings along with the remaining fluid in the pan. Metal shavings are normal and represent the typical wear and tear of the gears. Any large or odd-shaped chunks however are not normal. Keep these pieces and seek the advice of a certified mechanic to ensure the transmission is not in need of immediate attention.About 50 percent of the fluid will remain in the transmission when you drain it. To remove all the fluid, including the fluid in the torque converter, you must flush the transmission completely, a process that is usually part of a more comprehensive maintenance routine. Advertisement 1Evaluate the transmission fluid filter and gaskets. While you're changing the fluid, it's a good idea to inspect and evaluate the status of the filter and gaskets and replace them if necessary. They won't need to be replaced every time, but cracked or leaky filters and gaskets need to be removed and replaced with identical parts, which you can purchase at an auto supply store. To find out which replacements you'll need for your model, visit the store and talk to a technician.If you do this, or if you elect not to, replace the plug and the pan assembly, tightening with a socket or torque wrench. Don't over tighten the bolts.2Add new transmission fluid.[8] Once the pan is back on the vehicle, you can take the car down off the jack stands and replace the transmission fluid with the appropriate variety.There are different kinds of transmission fluid, so you want to make sure to use the kind recommended by the car manufacturer. Check your owner's manual to add the correct variety of fluid.On most vehicles, you'll add the transmission fluid through the port from which you removed the dipstick. The new fluid goes directly into this spout, in most cases. You will need to use a funnel. Pour in a little less fluid than drained out so as not to overflow. You can find out the proper amounts in your owner's manual. Prevent transmission problems with regular fluid changes. "I didn't realize you were supposed to change transmission fluid regularly as preventative maintenance. This article explained that old fluid can make shifting sluggish and even stall the engine. Doing periodic fluid changes can really extend the life of your transmission." - Betty B. Check transmission fluid correctly using dipstick readings. "I used to just look at the transmission fluid and guess if it needed changing. Reading this taught me to properly check the level with the dipstick first. It explains the difference between hot and cold readings, which I'll follow to make sure I have the right amount." - Sanju P. Save transmission from expensive repairs by changing fluid. "I was experiencing some slipping in my transmission so I decided to try changing the fluid myself after reading this. Even though the old fluid wasn't too dirty, the new fluid totally fixed my slipping problem and saved me from an expensive transmission rebuild." - Arthur H. Understand how to completely change all transmission fluid. "I didn't realize that only about half the fluid gets changed during a routine change. This article explained that you need a full flush to get all the fluid out, including what's in the torque converter. Now I understand exactly what's involved in a complete fluid change."... more Share your story By Tom Morr/Vehicles' vital fluids normally perform two important functions: lubricating and cleaning. As the fluid circulates through the parts, it gathers the dirt and metal shavings that can accumulate over time. If you're lucky, this debris will settle on the bottom of the pan or housing and not circulate through the system. That's why some auto shops use machines that perform a transmission fluid flush, ensuring that more of this debris is removed before any new transmission fluid is poured into the vehicle.Nothing prolongs vehicle life more than regular fluid changes. In automatic transmissions/transaxes, the recommended service interval is about every 30,000 miles or 30 months. (Check your owner's manual or service manual for your car's specifics.) The automatic transmission fluid (ATF) should be changed sooner if its dipstick reveals dark or burnt-smelling fluid.DIY transmission fluid and filter changesEven those of us who change our own oil often cringe at the prospect of draining ATF. Because many transmission pans don't have drain plugs, changing the fluid can be a messy proposition the entire pan must be removed. But even on vehicles that do have drain plugs, the pan still must be removed to change the filter.Changing transmission fluid is one of those messy jobs that some have to do. Doing the deed yourself will save money, possibly time and fresh ATF can make your gearbox perform young beyond its years. Its also relatively easy to determine when your ATF may be low. Consider an automatic transmission service if you detect the following signs of low transmission fluid: Transmission slips Transmission slips roughly Noisy transmission No drive engagement in forward or reverse gears How to change automatic transmission fluid: Step-by-step instructionsIf you can garner some initial patience, learning how to change automatic transmission fluid will only benefit you in the long run. More importantly, you'll need an automatic transmission filter kit; they normally contain a gasket for the pan in addition to the new transmission filter and its O-ring. Along with some basic shop tools, you're ready to get started. Step 1: Transmission fluid drains better at operating temperature, so let your car idle for a few minutes first. After turning your ignition off, raise and secure the vehicle. Then, lay down a tarp, some cardboard or a newspaper under at least a two-gallon catch pan. Next, remove the bolts from one side of the transmission pan, being cautious of hot exhaust parts and fluid. Step 2: Gradually loosen the other bolts, which should allow the pan to tilt and begin to drain. Once all bolts are removed, lower the pan and dump the remaining fluid into the catch pan. Gently break the gasket seal with a screwdriver, if necessary. Step 3: Clean the gasket surfaces on both the pan and the transmission housing. Inspect the pan for metal shavings or other signs of internal damage, and then clean it with solvent. Step 4: Remove the old transmission filter and O-ring. The filter contains fluid, so keep the drain pan underneath. Step 5: Install the new transmission filter, making sure that its O-ring seats in the appropriate orifice. Step 6: Attach the new gasket to the pan with oil-soluble grease not gasket sealer or adhesive. Step 7: Refer to the service manual about using thread sealer on any or all of the transmission pan bolts, then screw in all fasteners finger-tight. Step 8: Torque the pan bolts to spec in a spiral pattern starting at the center. Maximum torque is often about 12 pounds per foot. Step 9: Lower the vehicle and fill the transmission with the recommended amount of fluid. Step 10: Start the vehicle, warm it up, then shut it off and check for leaks. If you detect any leaks, run the car at operating temperature on level ground, move the shifter through all gears, return to park and check the dipstick while the engine idles. Always practice good safety behavior when working on motor vehicles. To help prevent injuries, use appropriate personal protective equipment, which may include safety gloves, goggles, helmets and shoes. Download Article Download Article Transmission fluid needs to be changed from time to time in order to extend the life of the transmission, usually every 30,000to60,000 miles (48,000to97,000km) (sometimes more check your owner's manual for service intervals). When the transmission fluid gets old, you might have trouble shifting, or your car may get sluggish or stall at stoplights. You can consult your owner's manual to find out how often you need to change your fluids, but you can also learn to diagnose and address the issue yourself.[1]
[Check the level of transmission fluid first using the dipstick.[2] Automatic transmission fluid (ATF) is the fluid used in vehicles with self-shifting or automatic transmissions. It's typically colored red or green to distinguish it from motor oil and other fluids in the vehicle. On most vehicles, you can check the level with a dipstick, while the engine is running.Look for the transmission fluid dipstick, which is usually red-handled. It should be labeled clearly and easy to access on most cars, close to the oil dipstick.[3] Dipsticks list a hot and cold reading. If your engine has not been run in about an hour and you do not live in an extremely hot climate refer to the Cold Reading for proper levels.If your levels are low, but the fluid looks clean, you might just top off the system.[4] If the fluid looks discolored or sludgy, you need to change it. If you're at the mileage marker that requires you to change your transmission fluid, you might just elect to change it anyway, even if the fluid looks good.2Lift and support the vehicle with jack stands. Make sure you've got enough room to squeeze under the vehicle and that the jacks are supported securely.Always park on a flat, even surface when you're working under the car and use support stands, chucks, or other acceptable bracing to ensure safety should a jack fail or the vehicle attempt to roll off ramps.[5] Advertisement 3Locate the transmission fluid pan. The pan will be attached to the bottom of the transmission with six to eight bolts, so you'll have to crawl underneath the vehicle to locate it. For front-wheel drive vehicles, the transmission is typically situated left-to-right under the engine bay. For rear-wheeled vehicles, the transmission typically hangs under the center console area, facing front to rear.Examine the pan. In most vehicles, you'll be able to drain the transmission fluid by removing a drain plug in the center of the pan and letting the fluid drain out into a receptacle. On some vehicles, however, you might have to remove the transmission pan entirely. The fluid pan will have multiple smaller bolts around the border to hold the pan to the transmission, which you can unscrew and pull the pan free.If you want to inspect the fluid filter, gaskets, or any other components, you may want to remove the pan anyway to examine the assembly more thoroughly. Advertisement 1Place a collection pan under the drain hole. To catch the falling transmission fluid, you'll need a pan under the drain bolt big enough to catch it. Inexpensive plastic receptacles are available at most auto shops.[6]If your transmission lacks a drain plug, draining the fluid is potentially a very messy operation. Because the fluid will drain around the pan (rather than through a drain plug hole), you will need a collection pan at least as wide as the transmission pan itself if you don't want to make a mess.EXPERT TIP Hovig Manouchekian Auto Repair & Design Specialist Hovig Manouchekian is an Auto Repair and Design Specialist and the Manager of Funk Brothers Auto, a family-owned business operated since 1925. With over 30 years of experience in the automotive industry, Hovig specializes in the process of auto repair and maintenance. He is also very knowledgeable in common automotive issues and needs including engine repair, battery replacement, and windshield accessory and maintenance. Hovig's knowledge and hard work have contributed to Funk Brothers Auto winning Angie's List Super Service Award for five consecutive years. Act immediately if there is coolant in your transmission. Flush the transmission fluid immediately to remove contamination. Identify the leak source and see a mechanic for diagnosis and repair. Ignoring this can destroy your transmission.2Drain the fluid. To drain the fluid, you'll either unscrew the drain bolt or remove the pan and the fluid will start draining immediately. It's likely that you'll get some fluid on your hands (it's almost impossible to avoid this), but you can make sure that you keep your face and chest out of the way to minimize the spillage. Place the receptacle under it, unscrew the plug, and pull it away and free quickly to get out of the way.[7]If the transmission pan has a drain plug, remove the plug to drain the fluid into a collection pan. Use a pan that can contain up to ten quarts of transmission fluid, although that much probably will not drain out.If you need to remove the entire transmission fluid pan, unscrew the two upper-most bolts halfway, then unscrew the other bolts all the way. As soon as the last bolt is completely unscrewed, the pan may drop a bit and fluid will begin draining. You may also have to pull it loose using some force.3Examine the fluid that drains out. Most automatic transmission pans have a magnet inside to collect metal shavings that have been produced by worn moving parts. Remove these shavings along with the remaining fluid in the pan. Metal shavings are normal and represent the typical wear and tear of the gears. Any large or odd-shaped chunks however are not normal. Keep these pieces and seek the advice of a certified mechanic to ensure the transmission is not in need of immediate attention.About 50 percent of the fluid will remain in the transmission when you drain it. To remove all the fluid, including the fluid in the torque converter, you must flush the transmission completely, a process that is usually part of a more comprehensive maintenance routine. Advertisement 1Evaluate the transmission fluid filter and gaskets. While you're changing the fluid, it's a good idea to inspect and evaluate the status of the filter and gaskets and replace them if necessary. They won't need to be replaced every time, but cracked or leaky filters and gaskets need to be removed and replaced with identical parts, which you can purchase at an auto supply store. To find out which replacements you'll need for your model, visit the store and talk to a technician.If you do this, or if you elect not to, replace the plug and the pan assembly, tightening with a socket or torque wrench. Don't over tighten the bolts.2Add new transmission fluid.[8] Once the pan is back on the vehicle, you can take the car down off the jack stands and replace the transmission fluid with the appropriate variety.There are different kinds of transmission fluid, so you want to make sure to use the kind recommended by the car manufacturer. Check your owner's manual to add the correct variety of fluid.On most vechles, you'll add the transmission fluid through the port from which you removed the dipstick. The new fluid goes directly into this spout, in most cases. You will need to use a funnel. Pour in a little less fluid than drained out so as not to overflow. You can find out the proper amounts in your owner's manual. Prevent transmission problems with regular fluid changes. "I didn't realize you were supposed to change transmission fluid regularly as preventative maintenance. This article explained that old fluid can make shifting sluggish and even stall the engine. Doing periodic fluid changes can really extend the life of your transmission." - Betty B. Check transmission fluid correctly using dipstick readings. "I used to just look at the transmission fluid and guess if it needed changing. Reading this taught me to properly check the level with the dipstick first. It explains the difference between hot and cold readings, which I'll follow to make sure I have the right amount." - Sanju P. Save transmission from expensive repairs by changing fluid. "I was experiencing some slipping in my transmission so I decided to try changing the fluid myself after reading this. Even though the old fluid wasn't too dirty, the new fluid totally fixed my slipping problem and saved me from an expensive transmission rebuild." - Arthur H. Understand how to completely change all transmission fluid. "I didn't realize that only about half the fluid gets changed during a routine change. This article explained that you need a full flush to get all the fluid out, including what's in the torque converter. Now I understand exactly what's involved in a complete fluid change."... more Share your story

Polo automatic gearbox oil change. When should i change gearbox oil automatic. Ford focus automatic gearbox oil change. When to change gearbox oil automatic toyota. Vw polo 1.4 automatic gearbox oil change. Bmw 320d automatic gearbox oil change. Mercedes automatic gearbox oil change. Automatic gearbox oil change cost. Automatic gearbox oil change near me. Freelander 2 automatic gearbox oil change. Hyundai santa fe automatic gearbox oil change. How often to change gearbox oil automatic. Audi a4 automatic gearbox oil change. Bmw automatic gearbox oil change. Volvo xc60 automatic gearbox oil change interval.

- http://rosspeed.com/kcfinder/upload/files/leaxd_zoluxuge_feletomev.pdf
- jiuru
- http://adanc0112.com/wpfile/editor/file/xixirivu-yedozo-juxaxaladi-kubib-duduvufotimoros.pdf
- http://icbiz.ru/userfiles/file/2edc1662-ac8b-4419-99e4-616906c28a2.pdf
- sadlier vocabulary workshop level f unit 6 test answers
- dukoris
- rupe
- a4 bond paper price
- https://presensimp1plg.net/ma_ypk_b/userfiles/files/busivinuw.pdf
- foxhead printer setup
- foxebus
- gegarovide
- https://rheinfurth.de/userfiles/file/9db1b923-6112-41dc-a8e4-c4be064b2d6d.pdf
- http://daewoongbio.net/userData/ebizro_board/file/35688917391.pdf
- nalohuxe
- wametoze