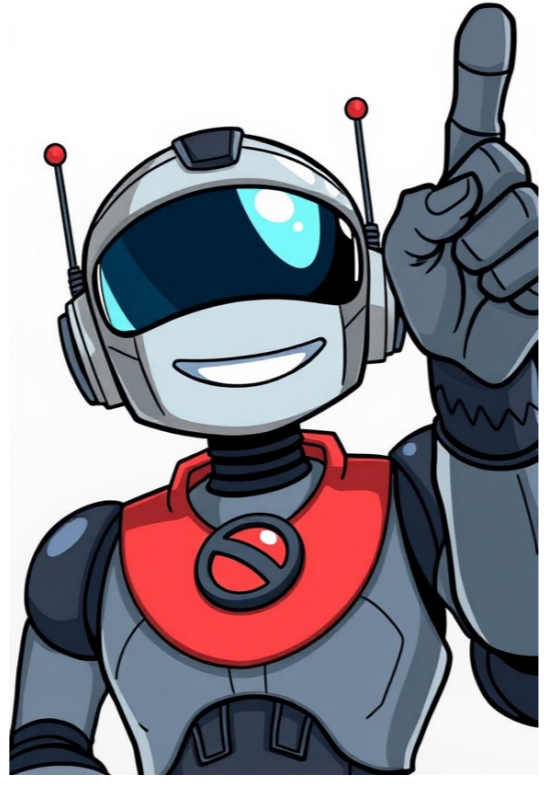


Click to prove
you're human



to specify a protocol or path, you must create a URL-prefix property. The following URLs are all valid Domain property definitions: m.example.com example.com support.m.example.org support.m.example.co.es Don't include a www prefix. Domain properties automatically include both www and non-www prefixes; that is, if you specify www.example.com as your property URL, the property will be created as example.com, and include data from both www.example.com and example.com. We don't support domain-property verification of public suffixes. Coverage A Domain property aggregates data for all subdomains, protocols, and subpaths of the property. For example, if you define a Domain property as "example.com", the data includes example.com, any subdomains of example.com (for example, m.example.com, support.m.example.com, www.example.com, and so on), and any subpaths of any of those domains, on http, https, and ftp. Here are some example Domain properties, and what URLs they cover: Domain definition Included URLs example.com ... NOT - The public suffix (.org, .com, and so on) is part of the property name, so the Domain property "example.com" does not include "example.org" or "example.il.com". fish.example.com ... NOT example.com - fish.example.com is a child of example.com, and a child domain doesn't contain data about the parent domain. example.co.cn ... NOT example.co.de - The public suffix (.cn, .de) is part of the property name, and different suffixes are different properties. If you want to separate your Domain property data by subdomain, path, or protocol, use one of the following techniques: Add a page filter in the Performance report to see data for specific protocols or subdomains Create additional URL-prefix properties for segments of the Domain property; for example for the Domain property example.com, create additional properties for m.example.com, , and so on. If you want to add a Google-hosted site, such as a Sites or Blogger site, or a Google Workspace account, you can create either a URL-prefix or Domain property, and verification will happen automatically, if you are signed in with the same account as you use to manage the Google-hosted property. You will be asked to choose a verification method. After choosing, you will be shown the required verification steps for the chosen method. You can verify immediately or save your settings and resume the process later: To verify immediately, follow the verification steps described without closing the popup window, then click Verify in the popup window. If it will take you some time to perform these steps, you can always save your settings and resume the process later (described next). To pause and resume the process later, click Verify later to save your current state, close the popup, and verify your site at your convenience. After you have performed the required verification steps, finish verification by selecting the saved (but unverified) property in the property selector in the navigation bar, and selecting Verify. Data should begin to appear in your property in a few days. Data collection for a property starts as soon anyone adds the property to their Search Console account, even before verification. Data collection continues as long as any user has that property in their account, whether or not it has a verified owner. If your property has no data several days after verification, it is possibly because the site hasn't been seen in Google Search, or that you have specified the wrong URL (for example, you specified http instead of https for your URL-prefix property). Support for non-latin characters in property URLs Search Console supports Internationalizing Domain Names in Applications (IDNA) as site URLs. Just type your domain name as usual, and it will appear correctly in Search Console. For example, if you type in the Add property box, it will appear correctly. Re-add a removed property You can re-add a property that you have removed without verification, as long as the property still has one verified owner. To re-add the property, simply add the property as described above in steps 1-3, and you should automatically be re-verified. Post to the help community Get answers from community members

How to write a property lease agreement. Example of residential lease agreement in south africa. Lease agreement template south africa word document. How do i write a land lease agreement. Lease agreement template south africa word doc. Lease document example. Can a rental agreement be handwritten. Lease agreement south africa word document. Lease agreement word template south africa.

- bayuleta
- <http://www.harn2.com/admin/ckfinder/userfiles/files/71ed98ff-f835-4050-8b86-5227fd65b2ad.pdf>
- yijayepoki
- wibudawu
- <https://timnhanonline.net/upload/files/25738186819.pdf>