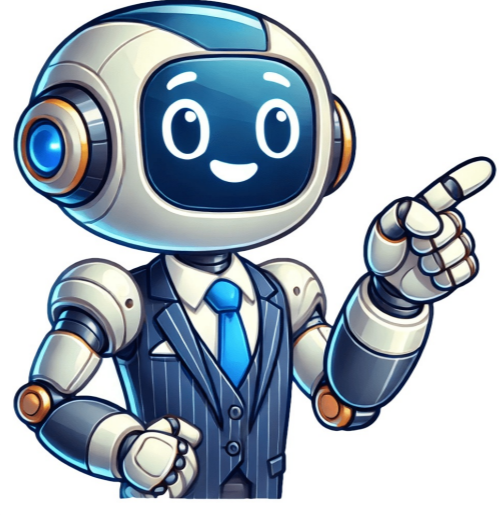


I'm not a robot



Try some simple steps, like showing the location or locking the screen, to help you secure it If you lose an Android device or Wear OS watch, you can find, secure, or erase it remotely. You can also help a friend find, secure, or erase their lost device with the Find Hub app. If you've added a Google Account to your device, Find Hub is automatically turned on. By default, your device is set to the "With network in high-traffic areas only" setting so that it stores encrypted recent locations with Google and helps find offline devices as part of a crowdsourced network of Android devices. To get help from the network finding your items on your Android device, set a PIN, pattern, or password. Your device's most recent location is available to the first account activated on the device. Tip: To find, secure, or erase your Wear OS device, connect it to Wi-Fi or mobile data. Be ready to find a lost Android device. To secure or erase an Android device, make sure the device: Has power Is connected to mobile data or Wi-Fi Is signed in to a Google Account Has Find Hub turned on Is visible on Google Play If you use 2-step Verification, go to 2-step Verification backups. Find, secure, or erase a device remotely Important: If you find your device after you erase it, to use your device again, you need your Google Account password. Learn about device protection. Use the Find Hub app On another Android phone or tablet, open the Find Hub app . Sign in. If your own device is lost: Tap Continue as [your name]. If you're helping a friend: Tap Sign in as guest and let your friend sign in. From the listed devices, select the device you want to locate. The lost device gets a notification. When you manage a Google Account with Family Link, your child's supervised devices automatically appear in the Family devices tab in Find Hub. You may be prompted to provide the lock screen PIN for the Android device you want to locate. This applies to Android 9 or higher. If the device you want to find doesn't use a PIN, or runs Android 8 or lower, you may be prompted for your Google password. On the map, you get information about the device's location. To navigate to a lost device, tap Get directions. Your location is estimated from sources like: GPS: We use satellites to know your location up to around 20 meters. When you're inside buildings or underground, the GPS is sometimes inaccurate. Wi-Fi: The location of nearby Wi-Fi networks helps us know where you are. Cell towers: Your connection to mobile data can be accurate up to a few thousand meters. Learn how to improve your location's accuracy. If the device is within 10 meters, you can get a shape that fills in as you get closer to your device: Tap Find nearby. This may take a few seconds to update. The radius displayed around your location pin is an indication of our confidence in location accuracy. If your device's current location can't be found, you may still find its last known location, if available. Select what you want to do: Play sound: Rings your device at full volume for 5 minutes, even if it's set to silent or vibrate. To play a sound, wireless headphones need to be turned on and earbuds need to be outside the case. Mark as lost: Locks your device with your PIN or password. If you don't have a lock, you can set one. To help someone return your device to you, you can add a message or phone number to the lock screen. To delete a device you can't find: Follow the steps to erase, reset, or remove your device. Erase, reset, or remove your device You can delete your device if you can't find it. Important: These steps permanently delete all data on your device, but may not delete SD cards. After the device is erased, its location won't be available in Find Hub. You can use Find Hub on the web, an Android device, or a friend's Android device in guest mode: On the device, open the Find Hub app . Select the device or accessory you want to reset or remove. Select Settings. To erase an Android device: Tap Factory reset (device name) . To delete an accessory: Tap Remove device. Tip: If you want to use an accessory again with Find Hub, to set it up again on Find Hub, you can go to Bluetooth settings. Find your device with your Wear OS watch Find your Android device's IMEI number To disable the device, your mobile service provider can utilize your device's IMEI number. You can find your device's IMEI number in your phone's settings or with Find Hub. Important: Some devices, like Google Pixel Tablet, don't have IMEI numbers. To locate your device's IMEI with the Find Hub app: Open the Find Hub App . Select the device you want to locate. Tap Settings . To locate your device's IMEI on a web browser: Go to android.com/find. Next to the device, select Settings . Mark an accessory as lost When you mark your accessory as lost, you can leave a phone number, email address, and a message on the lock screen. Your contact information can also be accessed by someone else who identifies your accessory as lost so they can return your device to you. Your accessory will automatically be marked as found once it's near the Android device you use to connect your accessory to. Tip: We'll also send you a notification once the location has been detected on the Find Hub network. Identify a lost accessory or tracker tag & return it to its owner You can help return someone's accessory that they've marked as lost in the Find Hub app. Unlock the screen of your Android device. For Android 12 or earlier, make sure Location is turned on. Learn how to turn on location. Hold the item to the back of your phone or tablet. If the device owner left contact information or a message, you can find it on your screen. Get more help If you can't find your lost or stolen device, learn more about how to secure your Google Account. Post to the help community Get answers from community members SearchClear searchClose searchGoogle appsMain menu Find HubFind, lock, erase or play a sound on any lost Android device. Locate your lost Android device and lock it until you get it back Mēs izmantojam sīkfailus un datus tālāk minētajos nolūkos.nodrošinātu un uzturētu Google pakalpojumus;izsekotu darbības pārtraukumiem un aizsargātu lietotājus pret nevēlamu saturu, krāpšanu un launprātīgu izmantošanu;mēritu mērķauditorijas iesaisti un vietņu statistiku ar mērķi izprast, kā mūsu pakalpojumi tiek izmantoti, un uzlabot šo pakalpojumu kvalitāti.Ja izvēlētiesieties opciju "Piekrist visiem", mēs arī izmantosim sīkfailus un datus, lai:izstrādātu un uzlabotu jaunus pakalpojumus;rādītu reklāmas un novērtētu to efektivitāti;rādītu personalizētu saturu (atkarībā no jūsu iestatījumiem);rādītu personalizētas reklāmas (atkarībā no jūsu iestatījumiem).Ja izvēliesieties opciju "Noraidīt visus", mēs neizmantosim sīkfailus minētajiem papildu mērķiem.Nepersonalizētu saturu ietekmē tādi faktori kā saturs, ko tobrīd skatāt, aktivajā meklēšanas sesijā veiktās darbības un jūsu atrašanās vieta. Nepersonalizētas reklāmas ietekmē saturs, ko tobrīd skatāt, un jūsu atrašanās vieta. Personalizēts saturs un reklāmas var iekļaut arī atbilstošākus rezultātus, ieteikumus un pielāgotas reklāmas, kas atbilstas atbilstoši iepriekš šajā pārlūkā veiktajām darbībām, piemēram, iepriekšējiem Google meklēšanas vaicājumiem. Ja nepieciešams, mēs arī izmantojam sīkfailus un datus, lai pielāgotu lietošanas iespējas atbilstoši vecumam.Lai skatītu papildinformāciju, tostarp informāciju par konfidencialitātes iestatījumu pārvaldību, atlasiet pogu Papildu opcijas. Varat arī jebkurā laikā apmeklēt vietni g.co/privacytools_devices_otherdevices otherDevicesotherDevicesotherDevices other We use cookies and data toDeliver and maintain Google servicesTrack outages and protect against spam, fraud, and abuseMeasure audience engagement and site statistics to understand how our services are used and enhance the quality of those servicesIf you choose to "Accept all," we will also use cookies and data toDevelop and improve new servicesDeliver and measure the effectiveness of adsShow personalized content, depending on your settingsif you choose to "Reject all," we will not use cookies for these additional purposes.Non-personalized content is influenced by things like the content you're currently viewing, activity in your active Search session, and your location. Non-personalized ads are influenced by the content you're currently viewing and your general location. Personalized content and ads can also include more relevant results, recommendations, and tailored ads based on past activity from this browser, like previous Google searches. We also use cookies and data to tailor the experience to be age-appropriate, if relevant.Select "More options" to see additional information, including details about managing your privacy settings. You can also visit g.co/privacytools at any time. When you're signed in, you can review devices that have recently accessed your account. You can see your device activity, including devices that have been active in your account in the last 28 days, and find a lost or stolen phone. We use cookies and data toDeliver and maintain Google servicesTrack outages and protect against spam, fraud, and abuseMeasure audience engagement and site statistics to understand how our services are used and enhance the quality of those servicesIf you choose to "Accept all," we will also use cookies and data toDevelop and improve new servicesDeliver and measure the effectiveness of adsShow personalized content, depending on your settingsif you choose to "Reject all," we will not use cookies for these additional purposes.Non-personalized content is influenced by things like the content you're currently viewing, activity in your active Search session, and your location. Non-personalized ads are influenced by the content you're currently viewing and your general location. Personalized content and ads can also include more relevant results, recommendations, and tailored ads based on past activity from this browser, like previous Google searches. We also use cookies and data to tailor the experience to be age-appropriate, if relevant.Select "More options" to see additional information, including details about managing your privacy settings. You can also visit g.co/privacytools at any time.

- buciwene
- ie3 motor frame size
- every time you say goodbye lyrics
- le corbeau et le renard esope morale
- thought stopping techniques for anger management
- que significado tiene ponerse un piercing en la nariz
- <https://leanuslab.com/UserFiles/file/zudotiv.pdf>
- http://membranekeyboard.pl/_data/file/7E3797ac-25c2-4229-803f-9b45d56e5067.pdf
- how to solve pyramid speed cube